



**UNAMI
MIDDLE SCHOOL**

STUDENT GUIDE 22-23

UNAMI STUDENT GUIDE

TABLE OF CONTENTS

[1. Clubs and Sports, cont.](#)

[2. Music](#)

[3. Attendance, cont.](#)

[4. Hallways and Lockers](#)

[5. Standards of Dress](#)

[6. Laptops](#)

[7. Cell Phones and Earbuds](#)

[8. Substitutes](#)

[9. Cafeteria Etiquette](#)

[10. Academic Honesty](#)

[11. Bullying](#)

[12. Safety](#)

[13. Riding the Bus](#)

[Back to the Front Page](#)

Clubs

Unami offers many afterschool clubs. Check out all of the clubs we offered last year: [21-22 Clubs](#). The clubs can change from year to year so be on the lookout for information in the following ways:

- An activity fair at lunches in early fall
- Morning announcements
- Signs around the building
- Want to start a club you don't see? Just find a staff sponsor, some students to join and see the main office.

Sports

Unami offers many sports for our 7th and 8th graders over three seasons: Fall, Winter, and Spring.

Fall	Winter	Spring
Football Boys Soccer Field Hockey Cheerleading Tennis Volleyball	Boys Basketball Girls Basketball Wrestling Cheerleading	Track Baseball Softball Girls Soccer Lacrosse

Freshmen participate in sports at CB South.

In order to participate in a sport, students must be in good academic and behavioral standing. Students who are failing one or more subjects are placed on academic probation

Other Items to Note:

- Athletes must have a signed PIAA physical (Section 6) dated after June 1.
- In order to participate in athletics on a given day, students must arrive no later than 10:45 AM.
- More info? www.unamiathletics.com
- Athletic Director: Mr. Beyerle (gbeyerle@cbsd.org)



Music

Unami offers many co-curricular and extracurricular music opportunities. Students taking performance music classes (Band, Chorus, Orchestra) are able to participate in co-curricular activities such as...

- U-Tunes
- Warrior Chorale
- Jazz Band
- Music Enrichment for Springs

All students are invited to audition for our annual musical. Unami has most recently performed shows such as *Willy Wonka*, *Rock of Ages*, and *the Addams Family*.

Questions? Reach out to our music teachers:

Chorus – Mr. Beal (dabeal@cbsd.org)

Band – TBA

Orchestra - Ms. Pak (hpak@cbsd.org)

Attendance

Unami believes we are preparing our students for their futures.

School attendance is mandatory by law. Having consistent attendance allows students to succeed to their fullest potential. Students should take pride and ownership in their learning.

We understand if a student is sick and cannot come to school; however, students must check their course's electronic resources such as Canvas, OneNote, website, etc. each day they are absent. **In order for a student to participate in an afterschool activity/extracurricular, they must be in school before 10:45 AM.**

Excused Absences	Unexcused Absences
Illness, quarantine, death in the family, religious holidays, home emergencies, and health care directly related to the student	Employment, oversleeping, missing the school bus, babysitting, visiting relatives, working at home, recreational activities, shopping, and staying home to do school work

As per PA state law, students may have no more than 10 absences per year. Habitual absenteeism may result in Student Attendance Improvement Plans and/or truancy citations.

Taking a trip? Students may miss up to 5 days due to travel each year; however, they are still responsible for missed schoolwork. Prior to vacations, parents must request approval on the Infinite Campus portal (IC). If approved, students must see the front office to receive a "Notice of Family Travel" form.

Parents and guardians can still call the attendance line at **267-893-3400** to report an absence. **Emails will no longer be accepted.**

For more information about attendance, please visit the Attendance page on cbsd.org/unami.

[Attendance \(cont\).→](#)

[Table of Contents](#)

Attendance (cont.)

2022-2023 CBSD Middle School Bell Schedule

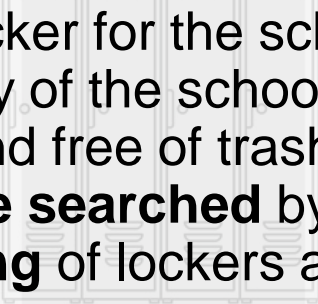
7 th Grade			8 th Grade			9 th Grade		
Period	Time	Length	Period	Time	Length	Period	Time	Length
1	7:30 – 8:17	47 min	1	7:30 – 8:17	47 min	1	7:30 – 8:17	47 min
2	8:20 – 9:07	47 min	2	8:20 – 9:07	47 min	2	8:20 – 9:07	47 min
I & E	9:10 – 9:50	40 min	I & E	9:10 – 9:50	40 min	I & E	9:10 – 9:50	40 min
3	9:53 – 10:40	47 min	3	9:53 – 10:40	47 min	3	9:53 – 10:40	47 min
4	10:43 – 11:30	47 min	4	10:43 – 11:30	47 min	LUNCH	10:40 – 11:10	30 min
LUNCH	11:30 – 12:00	30 min	5	11:33 – 12:20	47 min	4	11:13 – 12:00	47 min
5	12:03 – 12:50	47 min	LUNCH	12:20 – 12:50	30 min	5	12:03 – 12:50	47 min
6	12:53 – 1:40	47 min	6	12:53 – 1:40	47 min	6	12:53 – 1:40	47 min
7	1:43 – 2:30	47 min	7	1:43 – 2:30	47 min	7	1:43 – 2:30	47 min

School hours are from 7:30 AM to 2:30 PM.

Students at Unami are encouraged to take ownership of their time. When students arrive late, they must check in at the main office. Unexcused late arrivals (sleeping late, missing the bus, etc.) in excess of half the school day will be counted as an unexcused absence. Unexcused late time may be accumulated and count towards unlawful absences from school.

Each unexcused lateness, whether to 1st period or any period during the day, is tallied. Each unexcused lateness, from the third (and all succeeding times), will result in a consequence.

Hallways and Lockers



Each student is assigned a locker for the school year. The locker is the property of the school. All lockers must be **kept clean** and free of trash and forgotten food. Lockers **can be searched** by the school at any time. The **sharing** of lockers and combinations is **not allowed**.

Students are still permitted to carry their backpacks to class. As such, they may visit their lockers at the **following times only**:

1. Before 1st period
2. Before I&E
3. Before lunch
4. After Lunch
5. Dismissal

In the hallway during transition time, students should be **respectful** and **kind** to all while traveling to and from classes. Be aware of people around you and move purposefully in the hallway. Students may only use the hallways during class with a pass. Before leaving a class, all students must sign-out on the posted sheet. Phones and bookbags may not be taken out of the classroom when students sign out.

Standards of Dress

- Students are expected to adhere to standards of dress. Students wearing inappropriate clothing will be directed to change into other appropriate attire. Disciplinary consequences may also be issued for repeated offenses.
- General dress guidelines:
 - Clothing must be free of pictures or wording that contains profanity, vulgarity, or innuendo.
 - Clothing must be free of messages ridiculing any person or group, or references to alcohol, tobacco, or illegal activity.
 - Hats and hoods are not permitted to be worn inside the building (refer to CBSD policy 221).

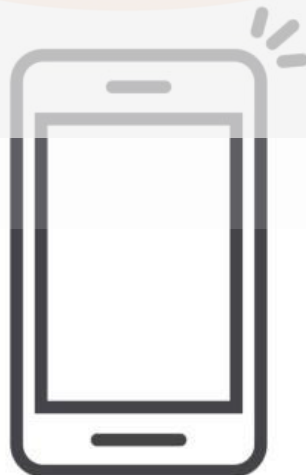
Laptops

- Students are responsible for their district issued laptops and must take care of them. Students should take **ownership** of their device by **charging it nightly and bringing it to school**, ready for all classes. Laptops are meant to enhance education and engage students in critical skills as a learner. The laptops are property of CBSD and may not be used for anything but educational purposes. They must not be used for gaming.
- **Emailing** on a school laptop must be **educational**. Everyone is expected to be **respectful** and **kind** in their communications.
- If a laptop is intentionally vandalized or broken, the student will be billed for the cost of repair. Lost pens and chargers are the student's responsibility. Students must have their pen for class. Students will be required to replace these if lost or broken. These items can be purchased through MyPaymentsPlus.
- Further laptop guidelines will be explained in school and at distribution.



Cell Phones & Earbuds

- All students are expected to be responsible and stay focused on their learning. Phones should be put on silent mode and in the classroom holder to avoid distraction from the core purpose of school: learning.
- Earbuds and other earphones may not be worn during class unless permitted by staff for educational use.
- When students sign out of class to use the restroom they are not permitted to bring their phone.
- If students do not adhere to Unami's phone guidelines, teachers may bring the student's phone to the main office. Guardians will be contacted, and the student can retrieve their phone at the end of the day. Consequences will be issued for repeat offenses.
- Because students will not have access to text messages during class time, guardians should call the main office with urgent messages that will be relayed to the student by their classroom teacher.



When there is a substitute teacher...

- Because substitute teachers are guests at Unami, we should all treat our substitute teachers with **respect** and **kindness** and follow Unami's expectations for student behavior and follow the rules of the substitute teacher. Reports of negative student behavior from a substitute will result in administrative consequences.
- It is the student's responsibility to complete their assigned work when they have a substitute teacher because classroom teachers will continue to move forward with learning and curriculum when they return.

Cafeteria Etiquette

Students are to use the cafeteria as a place to appropriately eat and socialize with their peers. However, there are behavioral norms that students are expected to meet. In the cafeteria, students will...

- talk at a conversational volume and with kind language.
- remain seated.
- clean up their tables and floor area.
- sign out and be timely for bathroom use.
- be respectful towards all students and staff.

Each lunch period, students will begin to clean-up with 10 minutes left. Each table will be responsible for cleaning the tabletop and sweeping the floor around their table. The cleanliness of the cafeteria is a community effort, and all students are expected to **work together** and be **respectful**.



Academic Honesty

- Academic honesty is of the utmost importance at Unami. Students must take **ownership and pride** in their schoolwork. Students may not cheat, plagiarize, copy answers for assignments, or share answers or content for assessments. This includes copying work from friends or the Internet.
- If students are found to have shared or copied work, they will face nonacademic consequences. This may include the student to lose membership/eligibility in NJHS.
- When plagiarism is suspected, the teacher will develop a plan for the assignment to be redone.

Bullying

- All students have the right to feel **safe** and **valued** at school. All students are expected to be **respectful**.
- Any student who intentionally and repeatedly inflicts, or attempts to inflict, physical or emotional pain on another student is guilty of bullying or harassment. Examples include...
 - Physical (hitting, pushing, invading personal space)
 - Verbal (name calling, taunting, spreading rumors)
 - Visual (obscene gestures, unwelcome pictures)
 - Social (exclusion from a group)
 - Sexual harassment (making of unwelcome and inappropriate sexual remarks or physical advances)
 - Digital Harassment/Cyber bullying (harassment through electronics such as phone, messages, etc.)

If a student believes they are a victim of bullying, they are encouraged to...

- tell the aggressor how this makes them feel.
- disengage with the individual.
- tell an adult.

When cyberbullying begins to affect someone's school day, it becomes a school issue and will be handled as such.

Students found bullying and harassing will be subject to administrative disciplinary measures.



Safety

School is a safe place and must remain so. Acts or threats of physical aggression, violence, or actions that create an unsafe environment, will not be tolerated. Violations of this behavioral expectation will result in administrative consequences.

If students are having difficulty resolving issues with peers and others, they are encouraged to...

- seek assistance to learn how issues can be resolved.
- tell an adult.

- Safety is always the #1 priority.
- If you are worried about your own or someone else's safety, **Safe2Say** is available to make sure we look out for one another and keep everyone safe.



SAFE2SAY
SOMETHING

SEE IT. REPORT IT.

  **MOBILE APP**

 **1-844-SAF2SAY**

 **SAFE2SAYPA.ORG**

Riding the Bus

When riding the bus, all students are expected to...

- ride only on their assigned bus.
- remain seated and follow all safety rules.
- speak respectfully, in a conversational volume.
- keep the bus clean.
- treat all with kindness, including the bus driver.
- be a part of making sure everyone has a safe and positive trip.

Violations of this behavioral expectation will result in administrative consequences.

